

# TOWARDS 2026

Excellence, Equity and Fullness of life for all



## FORWARD

As always, Christians imitate Jesus, our first Teacher. He is the educator of all educators.

The Catholic Education Northern Territory (CENT) Towards 2026 Strategic Plan is inspired by the Gospel of Jesus Christ in articulating a vision of educational excellence for every student in every school entrusted to our care.

The plan is the product of collegiality, reflection, and analysis of past practice by the CENT Leadership team and schools. Inspired by our vision, mission, and values, it is unequivocal in its aspiration to elevate learning, formation, and achievement of young people.

In conjunction with CENT Frameworks, it provides a clear roadmap for all those in Catholic Education Northern Territory to ensure we are moving forward together, directly connecting our educational mastery and leadership to the learning and wellbeing of the child in the classroom.

Towards 2026 challenges all of us to realise the potential in each child for growth in their learning. It asks us to place Christ at the centre of our teaching and through our leadership to give voice and agency to students.

The Strategic Plan identifies four system priorities to shape and drive data informed policy and practice in the work of Northern Territory Catholic schools, centres and offices during the period 2023 to 2026. Actions with measurable outcomes have been identified to support the achievement of the key strategic directions for each priority.

Our prayer is that this plan provides guidance to our way ahead for the rich tapestry of schools and educators in Catholic Education in the Diocese of Darwin. We take great pleasure in presenting Towards 2026 – Excellence, equity, and fullness of life for all.

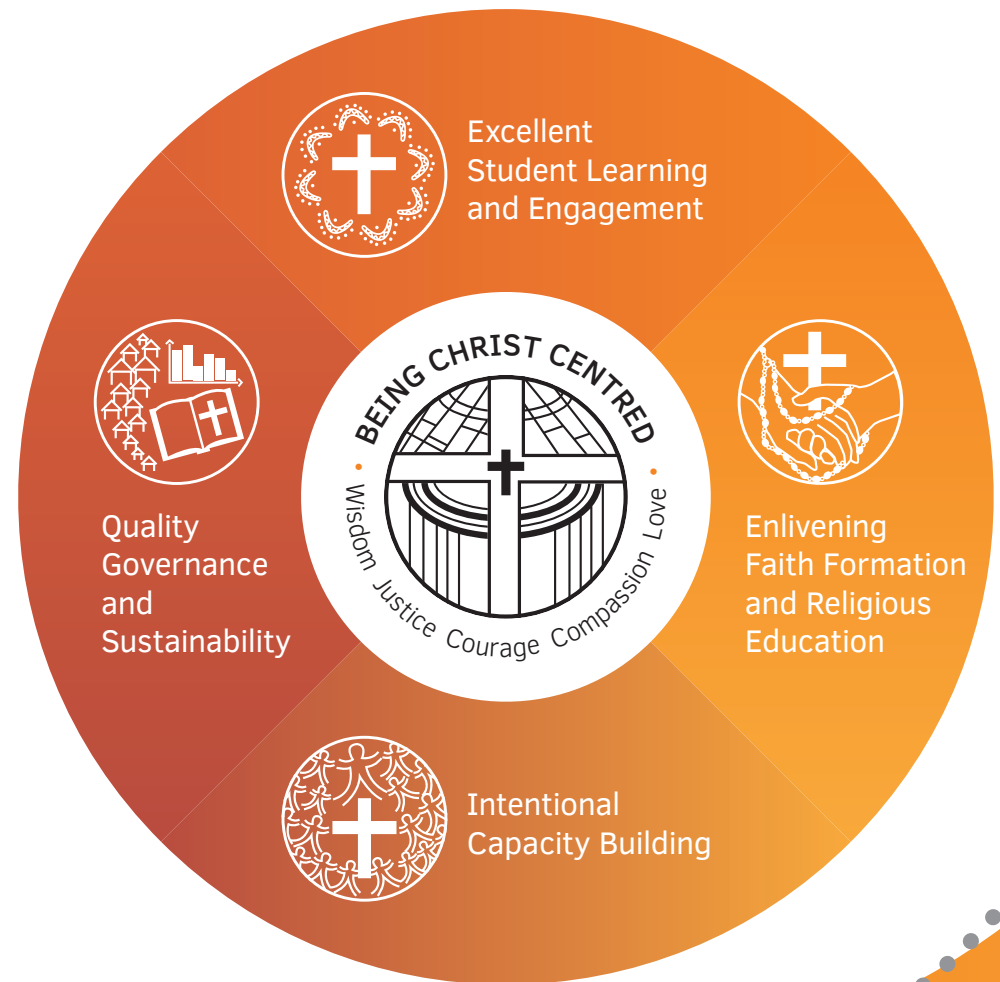
**Most Rev Charles V. Gauci DD**

*Bishop of Darwin*

**Paul Greaves**

*Director, Catholic Education Northern Territory*

## EDUCATIONAL EXCELLENCE PRIORITIES



## OUR VISION

Inspired by the Gospel of Jesus Christ, we commit to educational excellence, equity and fullness of life for all.

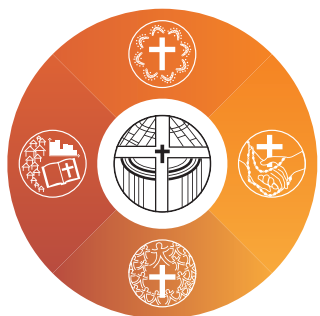
## OUR MISSION

Through servant leadership, we witness Gospel values in a faith community, integrating life and learning in a culture of care, collaboration and excellence.

## OUR VALUES

Wisdom leads to Justice, which is expressed in Courage, Compassion and Love.

# EDUCATIONAL EXCELLENCE PRIORITIES



## Excellent Student Learning and Engagement

Continuous improvement for growth in teaching, learning, pastoral care and wellbeing through evidence informed pedagogy and practices.

### STRATEGIC DIRECTIONS

Facilitating learning opportunities that integrate faith, culture and life experiences.

**Outcome** • Unique context (culture, language & spirituality) is evidenced in curriculum and pedagogy.

Promoting and facilitating evidence-informed teaching, learning assessment policies and practices.

**Outcome** • Unique context (culture, language & spirituality) is evidenced in curriculum and pedagogy.

Embedding teaching, learning and wellbeing framework principles and practices.

**Outcome** • Application of the frameworks are reflected in practice.

Applying common data sets and targets to inform progress and determine directions.

**Outcome** • Effective intervention and appropriate allocation of resources.



## Intentional Capacity Building

Empowering and enabling staff through quality professional learning and formation.

### STRATEGIC DIRECTIONS

Applying the leadership framework to support discernment and inform decision making.

**Outcome** • Integrated application of the Leadership Framework with people, practices and processes.

Providing sustainable programs, formation and pathways to grow leadership and professional capacity.

**Outcome** • Increased effectiveness in leadership and professional capacity.

Building capacity in the collection, interpretation and analysis of data to inform future directions.

**Outcome** • Evidenced informed decisions and measures are visible.



## Enlivening Faith Formation and Religious Education

Nurturing authentic expression of Catholic Mission and identity.

### STRATEGIC DIRECTIONS

Creating faith formation opportunities for our people that are intentional, ongoing, purposeful and contextually aligned to CENT frameworks.

**Outcome** • Increased staff knowledge and confidence in Catholic faith and practices.

Enhancing the classroom teaching, assessment and reporting of Religious Education using the Journey in Faith Curriculum and contemporary pedagogy in schools.

**Outcome** • Increased engagement of staff and students in achieving excellence in Religious Education.

Fostering dialogue and partnerships with families, parishes, diocesan and community stakeholders.

**Outcome** • Evidence of engagement and co-responsibility in Catholic identity and Mission.



## Quality Governance and Sustainability

Enabling good governance through co-responsible networks and partnerships.

### STRATEGIC DIRECTIONS

Partnering with key stakeholders in the transparent and effective stewardship of resources aligned to the CENT and related policies, processes and practices.

**Outcome** • CENT is fully compliant with system obligations and legislative requirements.

Facilitating networking opportunities and partnerships that are inclusive, culturally responsive, purposeful and aligned with system priorities.

**Outcome** • All staff are valued and actively engaged in a culturally responsive and safe workplace.

Ensuring System sustainability by managing risk and equitably distributing resources in a culture of care and co-responsibility.

**Outcome** • Financial stability and viability is evidenced.